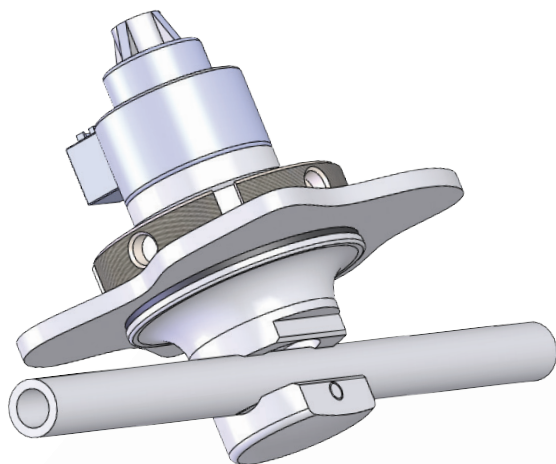


PPV PROPORTIONAL PINCH VALVE



Clippard's PPV series pinch valve proportionally controls the flow of liquids and gases by pinching a tube set using a high force, high accuracy stepper-driven linear actuator. Its unique design features enable you to take your applications to the next level by providing proportional resolution and linearity that far exceed those of competing models (see chart below).

As with all Clippard pinch valves, the only wetted material is the tubing, which is a medical and pharmaceutical grade thermoplastic elastomer developed to be an excellent alternative to silicone. In addition, the PPV's gasketed panel mount design makes it ideal for applications where sterility and washdown procedures are required.

- **Finer resolution and greater linearity**
(compared with competition)
- **Replaceable and sterilizable tube set**
(Gamma, EtO, and autoclave capable tubing)
- **Gasketed panel mount for clean rooms and washdown**
- **High force, high accuracy stepper-driven linear actuator holds position for power savings or at a loss of power**
- **Available in 1/4" and 3/8" OD tube sizes**
(other sizes also available, contact Clippard to discuss)



Function	2-way proportional
Material, Body	ENP aluminum
Material, Seals	FKM
Material, Wetted	TPE tubing (<i>no wetted areas in valve</i>)
Medium	Air, water, gas, or compatible fluids
Mount	Panel (<i>gasketed</i>)
Operating Pressure	20 to 30 psig (1.5 to 2 bar)
Panel Thickness	0.250" (6.4 mm) max.
Temperature, Ambient	32 to 180°F (0 to 82°C)
More Details	clippard.com/link/ppv

ELECTRICAL SPECIFICATIONS

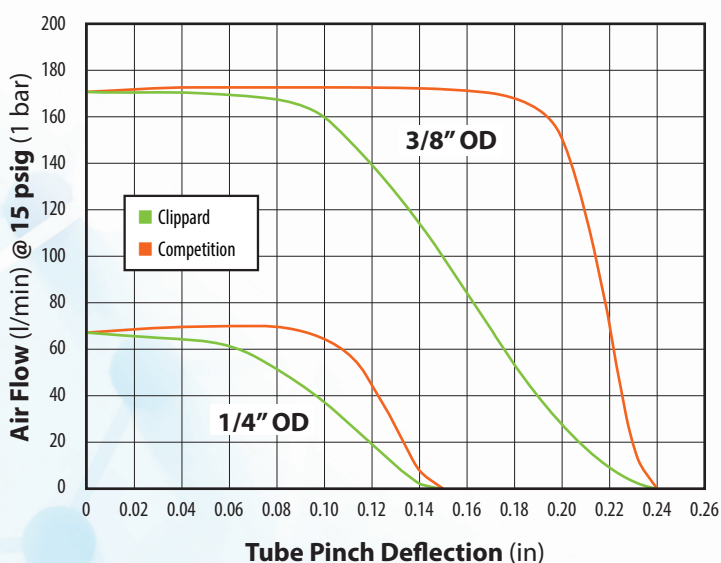
Driver	Bipolar chopper drive
Supply Voltage	5 VDC to motor
Wattage	3.85 watts nominal, 0 power consumption to maintain position

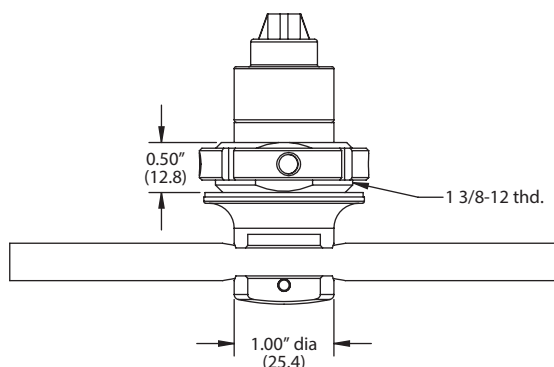
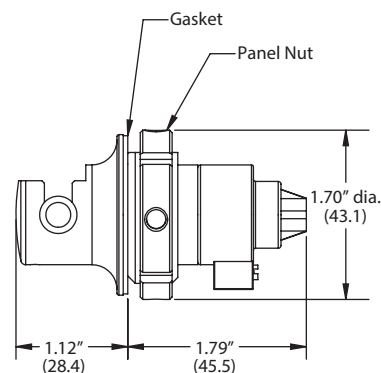
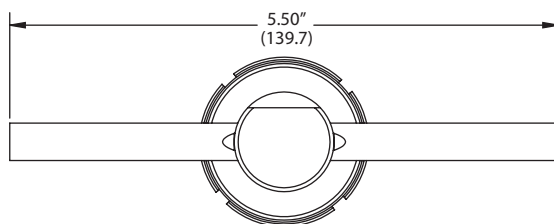
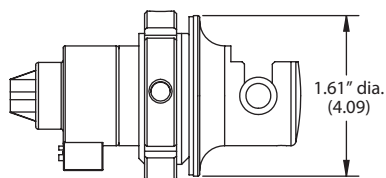
PRELIMINARY

Note: This product is still in development.

Specifications are subject to change.

TYPICAL PINCH VALVE FLOW CHARACTERISTIC





Applications

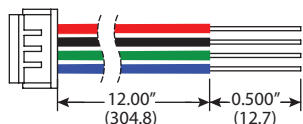
- Medical devices
- Analytical instruments
- Biotechnology
- Industrial process controls
- Food and beverage equipment

Dimensions shown are in inches
(millimeters listed in parentheses).

Visit clippard.com for more detailed
2D and 3D drawings as they become available.

LINEAR ACTUATOR CHARACTERISTICS

Current / Phase	385 mA
Inductance / Phase	8.08 mH
Insulation Resistance	20M ohms
Motor Voltage	5 VDC
Resistance / Phase	13 ohms
Temperature Rise	135°F (57°C)
Wattage	3.85 watts
Wiring	Bipolar



Wiring Harness (Included)

Pin 1, Red (A+); Pin 2, Black (A-);
Pin 3, Green (B-); Pin 4 Blue (B+)

HIGH QUALITY MEDICAL / PHARMACEUTICAL GRADE TPE TUBING

Certifications	REACH, RoHS, USP 661 compliant, CFR Title 21, USP Class VI, ISO 10993 (part 4 and 5)
Durometer	68 Shore A
Elongation at Break	470%
Material	Medical / pharmaceutical grade TPE
Size 1*	1/8" (3.2 mm) ID x 1/4" (6.4 mm) OD Max. operating pressure 30 psig (2 bar)
Size 2*	1/4" (6.4 mm) ID x 3/8" (9.5 mm) OD Max. operating pressure 20 psig (1.5 bar)
Sterilization	Autoclave to 275°F (135°C), gamma resistance to 45 kGy, ethylene oxide (EtO)
Tensile Strength	870 psig (60 bar) at break

*Other sizes also available, contact Clippard to discuss

ORDERING INFORMATION

Not Yet Available to Order—**Coming Soon!**

Contact Clippard or your local Clippard distributor to discuss participating in the early Beta release

For more info, scan the
QR code or visit
clippard.com/link/ppv

